

Common Winter Birds Identification Sheet

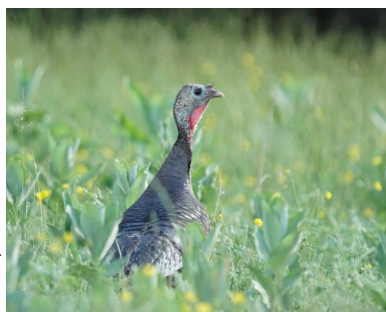
NH Audubon.org



This quick guide was developed to support participants in our Backyard Winter Bird Survey, but feel free to use it anytime. Another great resource for bird ID is the free [Merlin Bird ID App](#).

Wild Turkey

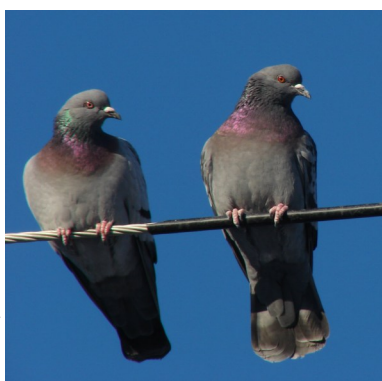
Photo by Grace McCulloch



- Large bird, often seen in flocks in open fields or foraging under bird feeders.

Rock Pigeon

Photo by Pam Hunt



- A familiar “city” bird!
- Gray overall with 2 black bars on the wing.

Mourning Dove

Photo by Pam Geiger



- Slender body. More gray-brown appearance than a Rock Pigeon.
- Long tail with white tips seen in flight.
- Cooing often mistaken for an owl.

Red-bellied Woodpecker

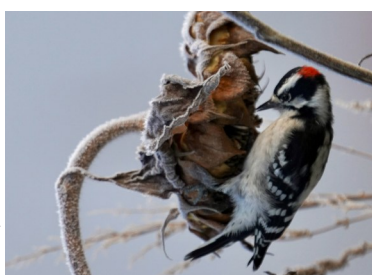
Photo by Grace McCulloch



- Black and white barred back.
- Red tinge on belly rarely seen but always have a red nape (or patch on back of neck).
- This is a female. In males the top of the head is red too.

Downy Woodpecker

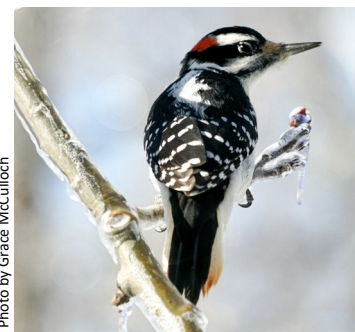
Photo by Grace McCulloch



- Short bill. Think: shorter than the length of head!
- Smaller than a Hairy but check the bill as size can be difficult to determine.
- Males have red on the back of head. Females don't.

Hairy Woodpecker

Photo by Grace McCulloch



- Long bill. Think: almost as long as their head!
- Red on head indicates a male.

Count your birds and participate in NH Audubon's **Backyard Winter Bird Survey!**



Scan here or go to backyardwinterbirds.nh Audubon.org to participate and find survey instructions.

Want to learn more about birds in NH? Visit our [State of the Birds](#) website.

Common Winter Birds Identification Sheet

NHAudubon.org



This quick guide was developed to support participants in our Backyard Winter Bird Survey, but feel free to use it anytime. Another great resource for bird ID is the free [Merlin Bird ID App](#).

Pileated Woodpecker

Photo by Grace McCulloch



- Largest woodpecker in New Hampshire.
- Bright red cap & bold white stripes on head & neck.

Blue Jay

Photo by Roger Frieden



- Large and blue overall.
- Look for the prominent crest on head and listen for their noisy “jay” calls.

American Crow

Photo by James Ferritas



- Common everywhere!
- Listen for their familiar caw.
- Did you know a group of crows is called a murder?

Black-capped Chickadee

Photo by Grace McCulloch



- Look for a black cap and white cheeks.
- Listen for their “chick-a-dee-dee-dee” call.

Tufted Titmouse

Photo by Fiona McCulloch



- Gray overall with some ruddy/orangey sides.
- Look for their crest and black on the forehead.

Red-breasted Nuthatch

Photo by Grace McCulloch



- Very energetic!
- Look for distinctive black and white markings on head, an orange belly, and a blue-gray back.

Count your birds and participate in NH Audubon's **Backyard Winter Bird Survey!**



Scan here or go to backyardwinterbirds.nhaudubon.org to participate and find survey instructions.

Want to learn more about birds in NH? Visit our [State of the Birds](#) website.

Common Winter Birds Identification Sheet

NHAudubon.org



This quick guide was developed to support participants in our Backyard Winter Bird Survey, but feel free to use it anytime. Another great resource for bird ID is the free [Merlin Bird ID App](#).

White-breasted Nuthatch

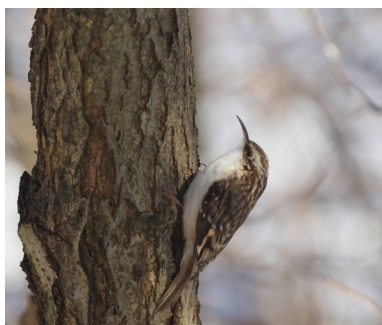
Photo by Grace McCulloch



- White face, black cap, and a blue-gray back.
- Bigger than a Red-breasted Nuthatch.

Brown Creeper

Photo by Caitlin McMonagle



- Look for the long decurved bill and long tail.
- Often seen foraging on the tree bark.
- White below and streaked brown above.

Carolina Wren

Photo by Caitlin McMonagle



- Look for the bright white eyebrow, otherwise the bird is buffy brown with a slightly decurved bill.
- Tail usually sticks up.

Eastern Bluebird

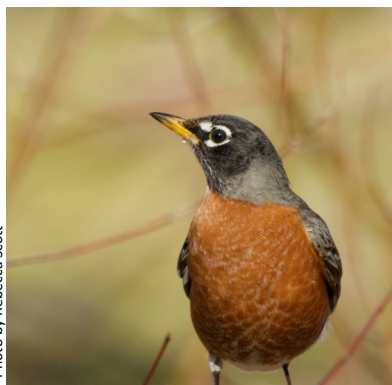
Photos by Grace McCulloch



- Male (left) is bright blue on back and head, orange on throat and breast. Female (right) is similar but dull overall.

American Robin

Photo by Rebecca Scott



- Larger than most songbirds.
- Gray on back with orange breast. Black head with white eye ring.

Northern Mockingbird

Photo by Len Medlock



- Gray and white overall.
- Long tail.
- White patches on wings and tail when in flight.
- Known to mimic other birds and car alarms.

Count your birds and participate in NH Audubon's **Backyard Winter Bird Survey!**



Scan here or go to backyardwinterbirds.nhaudubon.org to participate and find survey instructions.

Want to learn more about birds in NH? Visit our [State of the Birds](#) website.

Common Winter Birds Identification Sheet

NHAudubon.org



This quick guide was developed to support participants in our Backyard Winter Bird Survey, but feel free to use it anytime. Another great resource for bird ID is the free [Merlin Bird ID App](#).

European Starling



Photo by Joanne Worthen

- Stocky black bird.
- Look closely and you will see blue/green iridescent patterns on feathers.
- Widespread in cities and towns.

Cedar Waxwing



Photo by Grace McCulloch

- A very sleek bird.
- Yellow wash on belly and yellow band at the end of the tail.
- A black bandit's mask!

House Sparrow



Photos by Pam Geiger

- Male (left) is distinctive with black bibs and bright brown on necks and back.
- Female (right) is brown with pale brown to white eyeline.
- Widespread in cities and towns.

House Finch



Photo by Grace McCulloch

Photo by Pam Geiger

- Males (left) are fire engine red on the head, breast and rump, but have brown backs. Often confused for a Purple Finch.
- Females (right) are all brown.
- Both have a conical bill.

Redpoll



Photo by Grace McCulloch

- Often seen in flocks.
- Small yellow bill, round body, notched tail, and a little red cap.
- A little black marking on face.

Pine Siskin



Photo by Kyle Wilmarth

- A short notched tail and a thin pointed bill.
- Heavily streaked with yellow sometimes showing on wings and tail.

Count your birds and participate in NH Audubon's **Backyard Winter Bird Survey!**



Scan here or go to backyardwinterbirds.nhaudubon.org to participate and find survey instructions.

Want to learn more about birds in NH? Visit our [State of the Birds](#) website.

Common Winter Birds Identification Sheet

NH Audubon.org



This quick guide was developed to support participants in our Backyard Winter Bird Survey, but feel free to use it anytime. Another great resource for bird ID is the free [Merlin Bird ID App](#).

American Goldfinch

Photo by Grace McCulloch



- Small bird in muted yellow/brown in winter.
- Black on wings with buffy/yellow wing bars.

American Tree Sparrow

Photo by Jason Lambert



- Rusty cap.
- Gray line above eye with small rusty line through eye.
- Gray/white breast, sometimes with a spot.

White-throated Sparrow

Photo by Grace McCulloch



- Distinctive facial pattern with a white throat and a yellow patch in front of eye.

Dark-eyed Junco

Photo by Len Medlock



- Pink bill. Dark gray above, white below.
- Often seen foraging on the ground.
- Look for flashes of white from the outer tail feathers in flight.

Northern Cardinal

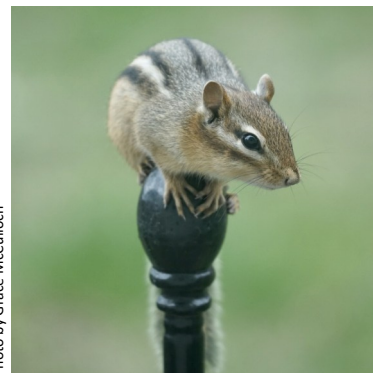


Photos by Roger Frieden & Grace McCulloch

- Male (left) is bright red with black on face.
- Female (right) is brown overall but same shape as male with tinge of red.
- Both have big red bills, with black on face next to bill.

Eastern Chipmunk

Photo by Grace McCulloch



- We now accept counts of chipmunks.
- Many participants have noticed an increase at feeders in winter.

Count your birds and participate in NH Audubon's **Backyard Winter Bird Survey!**



Scan here or go to backyardwinterbirds.nh Audubon.org to participate and find survey instructions.

Want to learn more about birds in NH? Visit our [State of the Birds](#) website.